

The Smart Choice for Lab Testing



# The Flexibility to Meet Your Needs

## CX3 Series

### CX43

- Ergonomic design
- 5-position nosepiece
- Brightfield, darkfield, phase contrast, simple polarization, fluorescence
- Long-life LED (60,000-hour life)
- Fixed Köhler illumination without adjustment

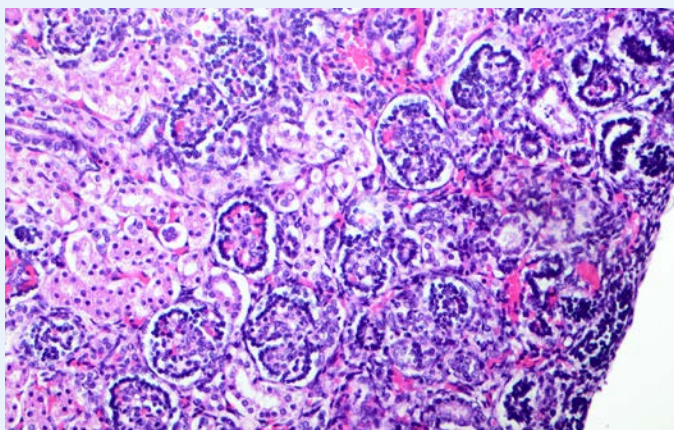


### CX33

- Ergonomic design
- 4-position nosepiece
- Brightfield, darkfield
- Long-life LED (60,000-hour life)
- Fixed Köhler illumination without adjustment



## User's Testimonials



Sample: Glomerulogenesis Tissue Microscope: CX43



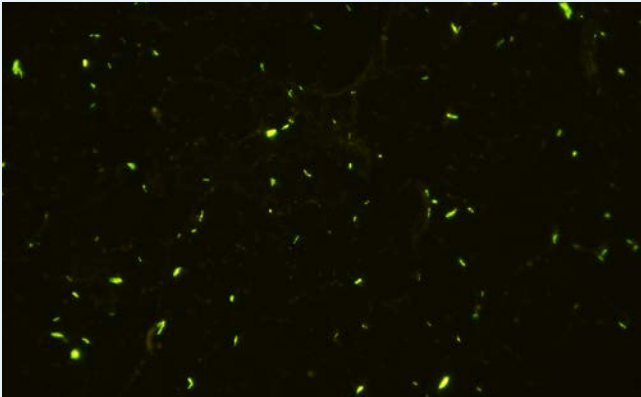
### Prof. Michael Vieth, M.D.

Director  
Institute for Pathology  
Klinikum Bayreuth GmbH  
Germany

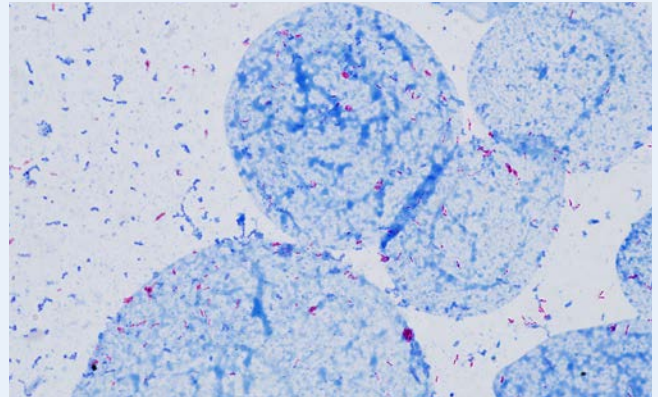
The CX3 series are comprehensive and offer an accommodating design that has won everyone over. The remarkably low weight of the CX3 series is notable. We often provide courses and workshops that require microscopes to be relocated, and this is much easier to do with the new CX3 series compared to larger microscopes.

The CX3 series is relatively compact compared with other microscopes and has a highly ergonomic design that enables all functions to be operated comfortably with arms and hands resting on the work surface. The energy efficiency of products is an increasingly important concern at our company, so we appreciate the long-life and low energy consumption of the LED illumination.

The CX3 series are not only for students but are also great solutions for lab workers who tend to spend long periods of time sitting at the microscope and who will benefit from the ergonomic design.



Sample: Tuberculosis bacteria Microscope: CX43



Acid-fast smear microscopy is still one of the key applications for the examination of tuberculosis in our institute. For Ziehl-Neelsen staining, “strong red (bacilli) and weak blue (background)” appearance is very important. Fluorescent staining needs bright color and clear contrast. The CX43 satisfies the requirements for both examinations.

**Satoshi Mitarai, M.D., Ph.D**

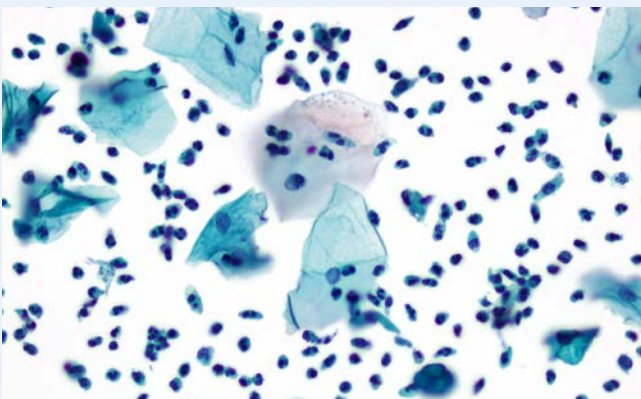
Professor/Head  
 Department of Mycobacterium Reference and Research Institute of Tuberculosis (RIT)  
 Japan Anti-Tuberculosis Association (JATA)  
 WHO Global Laboratory Initiative (GLI) member



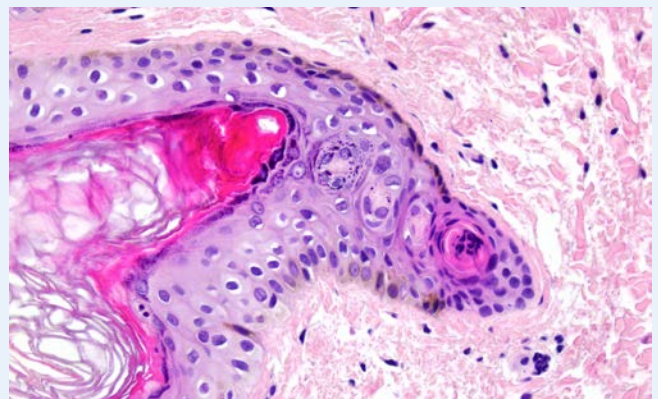
The CX43 microscope is easy to operate. We do not need to adjust the Köhler illumination, and there are many functions in the microscope to prevent errors, enabling workers to focus on observation. The LED light has a long life and it reduces eye strain. Including brightfield, this compact microscope also supports polarization and fluorescence observation and can meet the needs of daily lab work.

**Jiping Da, M.D., Ph.D**

Professor/ Director  
 Department of Pathology  
 China-Japan Friendship Hospital  
 China



Sample: Cervical cells Microscope: CX43



Sample: Fibroepithelial tissue Microscope: CX43

**Dong Chen, M.D.**

Professor/ Director  
 Department of Pathology  
 Beijing Anzhen Hospital  
 China

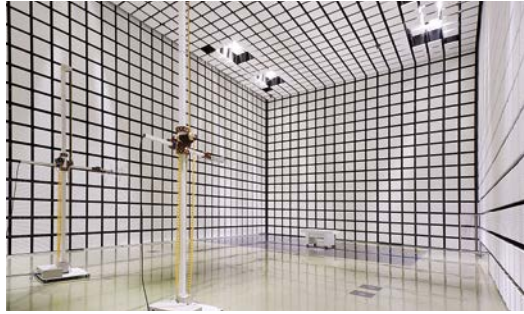
The CX43 microscope is very small and suitable for small labs. For lab workers who need to observe more than 100 slides every day, it is very convenient to operate the XYZ-axis knobs with one hand. This can improve work efficiency and reduce hand fatigue. I like handling the slide with fingers to observe, so the removable holder and XY stage lock pin are very helpful.



## Products That Meet Your High Standards

### In-House Quality Evaluation Center

Since 2000, Olympus has been certified in the United States by the National Voluntary Laboratory Accreditation Program (NVLAP) for electromagnetic compatibility (EMC) standards. We conduct EMC evaluations on scientific devices and in vitro diagnostic (IVD) medical equipment (IEC61326-2-6) in our testing center.



Olympus' electromagnetic compatibility (EMC) evaluation room (10 m × 10 m)

### Microscopes Are Subject to Rigid Inspection Prior to Shipping

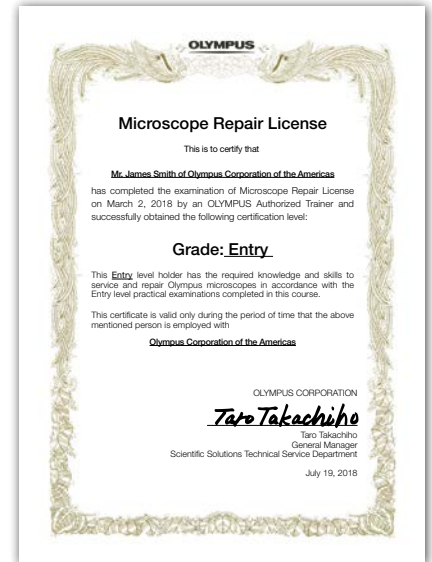
The Olympus factory has international standard ISO13485 (quality management system in medical devices) certification. BX3 series and CX3 series microscopes are subject to comprehensive inspection before shipment.



Shipping inspection at the Olympus factory

### The Olympus Licensing System

Olympus has adopted an original licensing system for training engineers to offer high-level service throughout the world. Our service teams provide high-quality worldwide repair and maintenance support. Olympus microscopes are subjected to stringent inspection standards for quality.



Sample of Repair License Certificate provided by Olympus

## BX3 Series - High-Performance Microscopes

BX3 series microscopes are fully customizable. Their ergonomic design is well-suited for intense daily microscope use.

### BX53

- Highly modular with ergonomic options
- High luminosity LED for accurate color reproduction
- Durable ceramic coated stage
- Up to 7-position nosepiece with optional coded function
- Light Intensity Manager automatically adjusts brightness
- Capable of brightfield, darkfield, phase contrast, polarization, DIC, and fluorescence imaging
- Multihead observation, up to 26 users



### BX46

- Ergonomic design
- LED for accurate color reproduction
- Durable ceramic coated stage
- 5 position nosepiece with coded function
- Light Intensity Manager automatically adjusts brightness



- EVIDENT CORPORATION is ISO14001 certified.
- EVIDENT CORPORATION is ISO9001 certified.
- EVIDENT CORPORATION is ISO13485 certified.

- All company and product names are registered trademarks and/or trademarks of their respective owners.
- Specifications and appearances are subject to change without any notice or obligation on the part of the manufacturer.

[EvidentScientific.com](http://EvidentScientific.com)

**EVIDENT**

EVIDENT CORPORATION  
Shinjuku Monolith, 2-3-1 Nishi-Shinjuku, Shinjuku-ku, Tokyo 163-0910, Japan

**OLYMPUS**